



Samsung color laser copier MFP MultiXpress C8540ND.

fastest in its class
heavy-duty system components
Samsung's Real-Time Calibration technology
Network Ready and Ready to Scan Print and Fax*



The Samsung MultiXpress C8540ND is the cost-effective way to bring versatile color printing / copying to any office. The MultiXpress range of productivity enhancement features, combined with low cost ownership, means efficient printing without compromising on quality. These functions make the Samsung MultiXpress C8540ND one of the fastest A4 color digital multi-function printers in the market today. The highly durable Samsung MultiXpress C8540ND is designed to be economical and productive in daily use. It features a low carbon footprint and effective power saving features that reduce energy bills and help achieve environmental targets.



fastest in its class

Printing 38 color A4 pages a minute makes the MultiXpress C8540ND one of the world's fastest A4 color DMFP's. With a scanning performance of 33 ipm, the MultiXpress C8540ND offers a fast and efficient solution.



heavy-duty system components

With an 800 MHz CPU, 1 GB of RAM and a generous 160 GB hard drive, the MultiXpress C8540ND makes print and scan jobs easy to process, store and handle. The added features and processing power mean it's suitable for the most demanding office environment.

Samsung's Real-Time Calibration technology



Real-Time Calibration technology ensures documents are printed to a consistently high color quality. However, when dealing with important documents that require special attention, users can choose to manually define the color quality that will appear on their documents.

Network Ready and Ready to Scan Print and Fax*



You can print, scan, even fax* through your IT network within minutes and with no disruption to the working day. And with one highly capable device taking care of the needs of even large workgroups and departments, all you'll notice is productivity increasing.

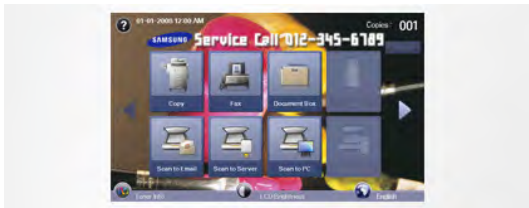
* Optional.

less space



Office space is also a big issue. In general, A3 DMFP occupies more office space. Typically, the footprint of a mono A3 capable device is much larger than that of an A4 device. MultiXpress C8540ND's economical design takes up to 75% less space in your office than general A3 DMFPs so you have more room around you.

customisable user interface (HWC1)



Customise the LCD panel with your corporate logo, IT support number and service / support details.

Modular system

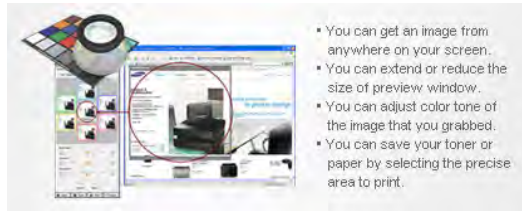


The Modular design makes consumables and accessory replacement effortless. For example, finisher accessories can be added by simply slotting in to the main device.

remote management

Using SyncThru™ admin 5, our outstanding online administration application, your machine can be managed and controlled in accordance with existing IT infrastructure policies.

Samsung Easy Color Manager



- You can get an image from anywhere on your screen.
- You can extend or reduce the size of preview window.
- You can adjust color tone of the image that you grabbed.
- You can save your toner or paper by selecting the precise area to print.

Easy Color Manager allows users to easily adjust color balance, brightness, contrast and saturation of any image that you view on your monitor. It can be especially useful if you have specific color preferences, or if your company has its own brand requirements.

Auto Color Detection



The introduction of the MultiXpress C8540ND provides users with the inclusion of an additional 'Auto' option; users no longer have to rely on manually differentiating between 'mono' and 'color' prints. As a result, users can skip through time consuming processes of separating different mode documents, while saving money by avoiding the cost of unnecessary color prints.

consistent color printing



The MultiXpress C8540ND handles the demands of premium quality 9600 dpi with ease. The Easy Color Manager and enhanced CTD sensor ensures color output is always clear, sharp and professional.

Power Saver



This economical Power Saver button helps to reduce the 80% power consumption than the amount of Ready status. For the save more energy, the machine could adjust time period which enter in Power Save mode. MultiXpress C8540ND uses 20% less energy than an average A3 DMFP making it much more economical and cost effective.

paper handling

- Adding optional paper trays can allow storage of up to 2720 sheets of paper at one time; this means a reduction in the frequency of refilling needed.
- The 2-bin finisher and 4-bin mailbox supports a 1000 sheet output, making it much more efficient in a challenging office environment.

easy to manage



Samsung's exclusive 7" color LCD touch screen and 3-dimensional UI design is simple and intuitive. The screen provides easy trouble-shooting capabilities resulting in minimum downtime.

minimised paper jam or misfeeding

MultiXpress C8540ND uses a centre loading method with a retard roller. When more than one paper is picked up, even though it is few and far between, the retard roller rotates in the opposite direction to put back the additional paper. This mechanism can minimise not only the misfeeding, but also the paper jam ratio.

Overview	Function	Print, Copy, Scan, Fax (optional), Network, Duplex
Print	Speed (Mono)	Simplex: up to 38 ppm in A4 (40 ppm in letter)Duplex: up to 33 ppm in A4 (35 ppm in letter)
	Speed (Color)	Simplex: up to 38 ppm in A4 (40 ppm in letter)Duplex: up to 33 ppm in A4 (35 ppm in letter)
	First Print Out Time (Mono)	less than 14 seconds
	First Print Out Time (Colour)	less than 14 seconds
	Resolution	up to 9600 x 600 dpi effective output
	Emulation	PCL5ce, PCL6, PostScript3, PDF Direct V1.4
	Duplex	standard
Copy	Speed (Mono)	up to 38 cpm in A4 (40 cpm in letter)
		up to 38 cpm in A4 (40 cpm in letter)
		up to 1200 x 1200 dpi
	First Copy Out Time (Mono)	less than 13 seconds
	First Copy Out Time (Colour)	less than 13 seconds
	Zoom Rate	25% ~ 400% (Platen copy), 25% ~ 200% (DADF copy)
	Multi Copy	1 ~ 999
	Duplex Copy standard (1 : 2, 2 : 2, 2 : 1)	
	Copy Features ID Card Copy, Auto Fit, Margin Shift, Book Copy, Covers, Transparencies, Auto Suppression, Booklet, N-up, Clone, Poster	
Scan	Compatibility	N / W Twain standard, WIA standard

	Method	color CCDM
	Resolution (Optical)	up to 600 x 600 dpi
	Resolution (Enhanced)	up to 4800 x 4800 dpi
	Scan to	HDD, e-mail, FTP, SMB, client, USB memory (direct scan)
Fax	Compatibility	ITU-T G3, Super G3
	Modem speed	33.6 Kbps
		mono: up to 300 x 300 dpi color: up to 200 x 200 dpi
	Memory	HDD store, 500 jobs
	Auto Dial	1 - touch dial: 40 locations speed dial: 200 locations
	Fax Feature	Color Fax, On Hook Dial, Pause, Auto Redial, Last Number Redial, PC Fax
Paper Handling	Input Capacity and Types	standard: 520-sheet cassette tray, 100-sheet MP tray max: 2720 sheets
	Output Capacity and Types	500 - sheet face down
	Media Size	98 x 148 mm (3.85" x 5.83") ~ 216 x 1200 mm (8.5" x 47.2") banner size printing: 216 mm x 1200 mm
	Media Type	Plain Paper, Thick Paper, Thin Paper, Bond Paper, Color Paper, CardStock, Labels, Transparency, Envelope, Preprinted, Letterhead, Recycled Paper, Cotton, Archive
	ADF Capacity	100 - sheet DADF
	ADF Document Size	width: 145 ~ 216 mm (5.7" ~ 8.5") length: 145 ~ 356 mm (5.7" ~ 14.0") for single page scan 145 ~ 400 mm (5.7" ~ 15.7") for multi pages scan bank check scan: 69.6 mm x 152.4 mm
General	LCD	800 x 480 7" WVGA color touch screen
	Memory / Storage	1 GB (max. 2 GB) / 160 GB HDD
	OS Compatibility	Windows: 2000 / XP (32 / 64 bit) / 2003 (32 / 64 bit) / Vista (32 / 64 bit) Windows Terminal Services Linux: RedHat 8.0 ~ 9.0 - Fedora Core 1 ~ 4 - Madrake 9.2 ~ 10.1 - SuSE 8.2 ~ 9.2 Mac: Mac OS X 10.3 ~ 10.5 others: Citrix Presentation Server
	Interface	hi-speed USB 2.0, Ethernet 10 / 100 / 1000 base TX, USB host 2.0 (scan to USB, USB print)
	Noise Level	printing: 54dB copying: 57 dB standby: 43 dB
	Duty Cycle, Monthly	100000 sheets / month
	Dimension (W x D x H)	606.8 x 575 x 815.5 mm
	Weight	set: 71.5 kg (with consumables)
Consumables	Black Toner Cartridge	average continuous black cartridge yield: 20000* standard pages(1)
	Yellow/Magenta/Cyan Toner Cartridge	average continuous black cartridge yield: 15000* standard pages(2)
	Imaging Unit	30000 pages

	Transfer Belt	100000 pages
	Waste Toner Container	48000 images (mono 100% - 48000 pages / color 100% - 12000 pages)
Options	Options	1 GB memory: CLX-MEM400optional cassette feeder (x2): SCX-6555Ahigh capacity feeder: SCX-HCF100fax kit: SCX-FAX210finisher: SCX-FIN11S2 - bin finisher: SCX-FIN20S4 - bin mailbox: SCX-MBT40Sstaple cartridge: SCX-STP000stand Short type: SCX-DSK10Sstand Tall type: SCX-DSK10TFDI kit: SCX-KIT20FSmarThru workflow v. 1.0: SCX-KIT11SJScribe S / W enabler: SCX-KIT10J

Features and specifications are subject to change without prior notification.

- (1) Declared yield value in accordance with ISO / IEC 19798.
- (2) Declared yield value in accordance with ISO / IEC 19798.